



NAMLONG'S CATALOGUE

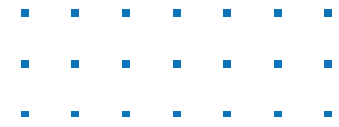
WELCOME TO NAMLONG MATERIALS & EQUIPMENT CO., LTD

Established since 2015

TABLE OF CONTENTS

COMPANY BACKGROUND	1
CHAPTER I: STEEL PLATE & COIL	2
CHAPTER II: SMLS & WELD STEEL PIPE	5
CHAPTER III: STEEL SHAPE	8
CHAPTER IV: STAINLESS STEEL, ALUMINIUM, COPPER, BRASS & BRONZE	12
CHAPTER V: LINEPIPE MATERIALS	17
CHAPTER VI: MISCELLANEOUS MATERIALS FOR RISER CLAMP, LOADING OUT JACKET, MUDMAT, DOCKING FENDER & HELIDECK	24

COMPANY BACKGROUND



We _ NamLong Materials Equipment Co., Ltd imports & distributes all kind of carbon steel, stainless steel & alloy materials such as pipe, plate, beam, angle, channel, rod bar, flat bar, pipe fitting, flange, bolt & nut, gasket & all miscellaneous materials to Fresh Water Distributors, Chemical Manufacturers, Ship Building Manufacturers, Mechanical & Construction Companies, Pressure Vessel & Storage Tank Manufacturers, Oil & Gas Industries ... in south of Vietnam.

PRESTIGE-QUALITY-REASONABLE PRICE & ON TIME DELIVERY



CHAPTER I

STEEL PLATE & COIL

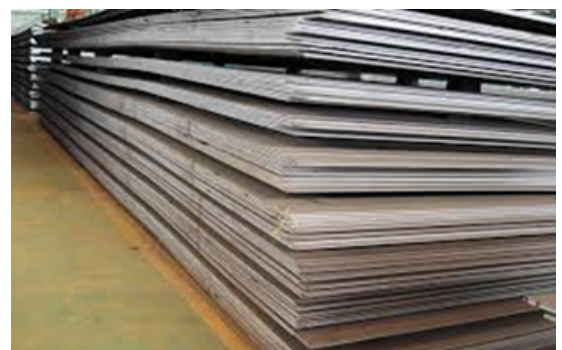
1.1 GALVANIZED STEEL PLATE & COIL (Y.S \geq 248MPA; \geq 355MPA)

- Standard: ASTM/JIS/EN10025
- Grade: A36/SS400/SM490/S275R/S275J0/S275J2G3
- Galvanizing standard: ASTM A123/ASTM A153/ASTM B695
- Thickness: 2mm to 16mm
- Width: 1219mm to 2000mm
- Type of Cert: EN 10204: 3.1 or EN 10204: 3.2 (ABS/BV/DNV/LLOYDS...)
- Steel mills: Nippon/Hyundai/Posco-Korea/Gunung -Indonesia/Posco – Viet Nam
- Origin: Japan/Korea/Indonesia/Viet Nam



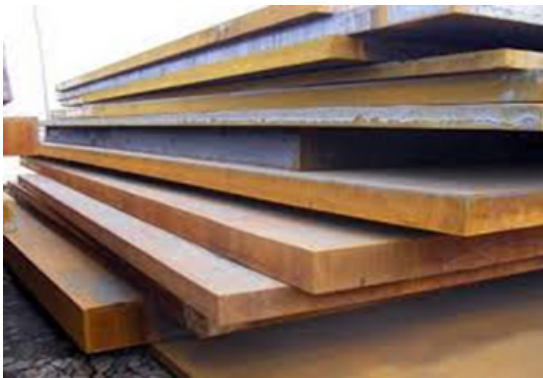
1.2 STEEL PLATE IN MEDIUM GRADE (Y.S \geq 248MPA)

- Standard: ASTM/JIS/EN10025/BS4360
- Grade: A36/A283-C/SS400/S275/BS4360-GR.A
- Thickness: 2mm to 80mm
- Width: 1500mm to 3050mm
- Length: 6000 to 12050mm
- Type of Cert: EN 10204: 3.1 or EN 10204: 3.2 (ABS/BV/DNV/LLOYDS...)
- Steel mills: Tata
Steel/Nippon/Hyundai/Dongkuk/Posco-Korea/Gunung -Indonesia/Posco – Viet Nam
- Origin: UK/Japan/Korea/Indonesia/Viet Nam



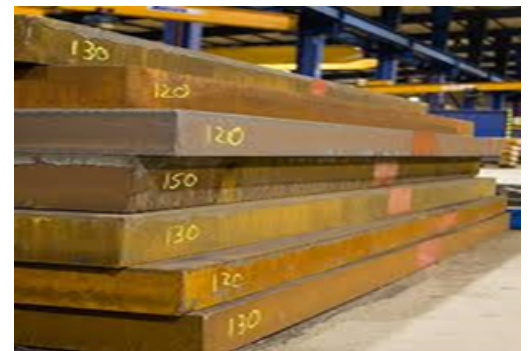
1.3 HIGH TENSILE STEEL PLATE (Y.S \geq 345MPA)

- Standard: ASTM/JIS/EN10025/BS7191
- Grade: A572 Gr.50/A588 Gr.B/SM490YA/S355JR/S355J0/S355J2+N/BS7191 GR.355
- Thickness: 6.35mm to 80mm
- Width: 1524mm to 3050mm
- Length: 6096mm to 12.050mm
- Type of cert: EN 10204: 3.1 or EN 10204: 3.2 (ABS/BV/DNV/LLOYDS...)
- Steel mills: Tata Steel/Nippon & Sumitomo/Hyundai/Dongkuk/Posco/Gunung - Indonesia/
- Origin: UK/Japan/Korea/Indonesia



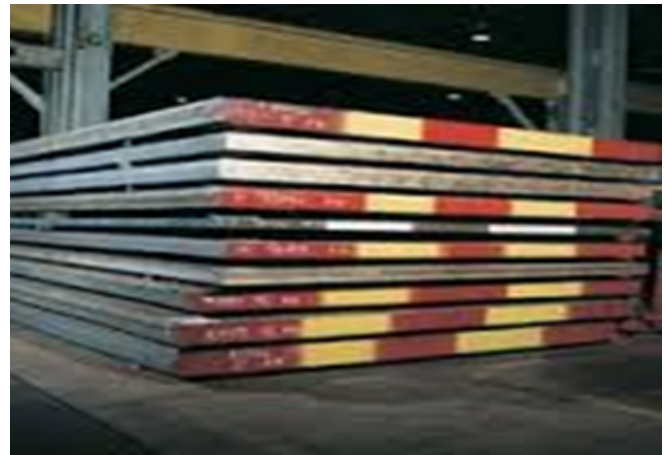
1.4 HIGH TENSILE STEEL PLATE FOR OFFSHORE STRUCTURE (Y.S \geq 355MPA)

- Standard: API/BS7191/EN10225
- Grade: API 2W Gr.50/Gr.50T/Gr.60; API 2H Gr.50; API 2Y Gr.50/Gr.60; BS7191 Gr.355EM/GR.355EMZ; S355 G7/G8/G9/G10 + N or M
- Thickness: 9.53mm to 150mm
- Width: 1524mm to 3050mm
- Length: 6096mm to 12.050mm
- Supplementary Testing: Ultrasonic Examination; Notch Toughness at lower temperature; Individual plate test; Through – thickness Z test; Low sulfur steel for improved though thickness properties; Low nitrogen content; Train – Aged Charpy V-Notch; Notch toughness using drop weight; Surface quality; Thickness tolerance (**S1; S2; S3; S4; S5; S7; S8; S12; S13; S14**)
- Type of Cert: EN 10204: 3.2 (ABS/BV/DNV/LLOYDS...)
- Steel mills: Tata Steel/Nippon & Sumitomo/Hyundai/Dongkuk/Posco
- Origin: UK/Japan/Korea



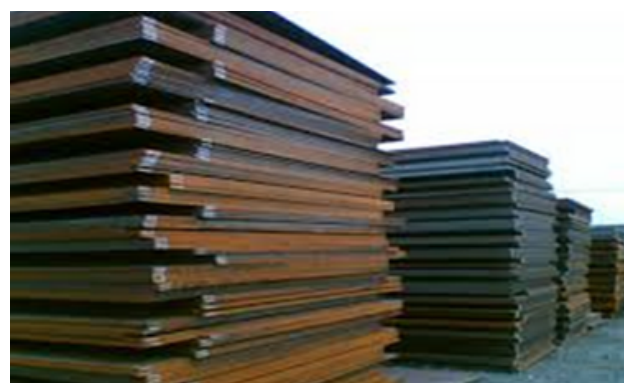
1.5 STEEL PLATE FOR SHIP BUILDING (Y.S \geq 355MPA)

- Standard: ASTM/DNV/ABS/BV/GL/LOYDS
- Grade: ASTM A131 AH36/DH36/EH36; NV A36/NV D36/NV E36; GR.A/GR.B.GR.C
- Thickness: 6.35mm to 60mm
- Width: 1524mm to 3050mm
- Length: 6096mm to 12.050mm
- Supplementary Testing: S1; S2; S3; S4; S5; S7; S8
- Type of cert: EN 10204: 3.2 (ABS/BV/DNV/LLOYDS...)
- Steel mills: Nippon & Sumitomo/Hyundai/Dongkuk/Posco/Gunung - Indonesia
- Origin: Japan/Korea/Indonesia



1.6 STEEL PLATE FOR HIGH PRESSURE TANKS, PRESSURE & BOIL VESSELS

- Standard: ASME/ASTM
- Grade: ASME SA 285/ASTM A285 Gr.A, Gr.B, Gr.C; ASTM A516 Gr.60-70/ASME A516 Gr.60-70; ASTM A537 Class 1,2,3/ ASME A537 Class 1,2,3.
- Thickness: 6.35mm to 60mm
- Width: 1524mm to 3050mm
- Length: 6096mm to 12.050mm
- Supplementary: S1; S2; S3; S4
- Type of cert: EN 10204: 3.2 (ABS/BV/DNV/LLOYDS...)
- Steel mills: Nippon & Sumitomo/Hyundai/Dongkuk/Posco
- Origin: Korea/Japan



CHAPTER II

SMLS & WELD STEEL PIPE

2.1 SMLS STEEL PIPE IN MEDIUM GRADE (Y.S \geq 248MPA)

- Standard: ASTM/ASME/API 5L
- Grade: ASTM A106 Gr.A/B; ASTM A53 Gr.A/B; ASME SA A106 Gr.B; API 5L Gr.B/X42
- Outside Diameter: 1/2 inch to 16 inches
- Thickness: SCH20 to XXS
- Length: 6000mm to 11800mm
- Type of cert: EN 10204: 3.1 or EN 10204: 3.2 (ABS/BV/DNV/LLOYDS...)
- Makers: Sumitomo/JFE/Acelormittal/V&M/Tenaris/Benteler/ILJIN Steel Corp-Korea/Tubos – Spain
- Origin: Japan/South Africa/Brazil/France/Germany/Argentina/Italy/Korea/Spain



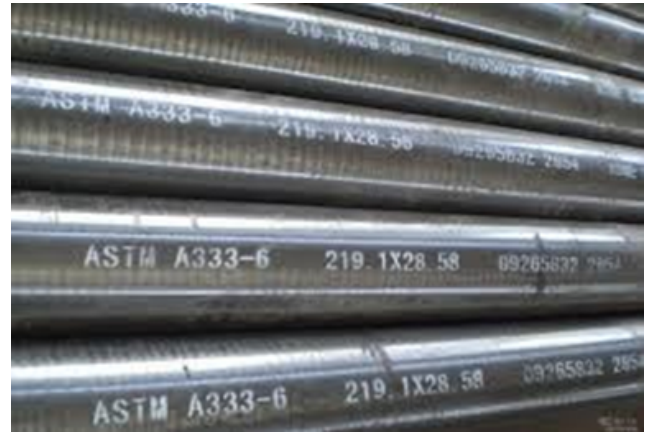
2.2 HIGH TENSILE SMLS STEEL PIPE (Y.S \geq 355MPA)

- Standard: API 5L
- Grade: API 5L Gr.X52N PSL2; API 5L Gr.X52Q PSL2; API 5L Gr.X56Q PSL2; API 5L Gr.X65 PSL2
- Outside Diameter: 1.0 inch to 16 inches
- Thickness: SCH40 to XXS or none size thickness
- Length: 6000mm to 11800mm
- Supplementary Testing: UT, Hydrotest, Impact Test, CTOD, Z-Test
- Type of cert: EN 10204: 3.2 (ABS/BV/DNV/LLOYDS...)
- Maker: Sumitomo/JFE/V&M/Tenaris/Benteler-Germany/
- Origin: Japan/Brazil/France/Germany/Argentina/Italy



2.3 LOW TEMPERATURE SMLS STEEL PIPE (Y.S \geq 245MPA)

- Standard: ASTM/ASME
- Grade: ASTM A333 Gr.6/ASME SA A333 Gr.6
- Outside Diameter: 2 inches to 12 inches
- Thickness: SCH40 to XXS
- Length: 6000mm to 11800mm
- Supplementary: UT, Hydrotest, Impact Test,
- Type of cert: EN 10204: 3.1 hoặc EN 10204: 3.2 (ABS/BV/DNV/LLOYDS...)
- Makers: Sumitomo/JFE/V&M/Tenaris/Benteler-Germany/Acelormittal
- Origin: Japan/Brazil/France/Argentina/Italy/South Africa



2.4 ERW STEEL PIPE (Y.S \geq 248MPA)

- Standard: ASTM/API 5L/BS EN10255/BS 1387
- Grade: ASTM A53 Gr.A, B/ API 5L Gr.A, B/ BS 1387 - 2004
- Outside Diameter: 1/2 inch to 16 inches
- Thickness: SCH20 toSCH120
- Length: 6000mm to 11800mm
- Type of cert: EN 10204: 3.1
- Makers: SEAH-Viet Nam/Hoa Phat - Viet Nam/Maruchi Sun- Viet Nam/Hyundai Hysco & SEAH
- Origin: Viet Nam/Korea



2.5 SAW/LSAW LARGE PIPE (Y.S \geq 248MPA & Y.S \geq 355MPA)

- Standard: API 5L/ASME/API 2B
- Grade: API 5L GR.X52M/ API 5L Gr.X65M/ API 2H/API 2W/ EN 10025 S355/EN 10225 S355 G6-G10 + N/M.
- Outside Diameter: 18 inches up to 120 inches
- Thickness: 9.53mm up to 120mm
- Length: 1250 mm to 12000mm
- Plate (raw materials) from: Posco/Hyundai/Dongkuk/Nippon/JFE
- Type of cert: EN 10204:3.2 (ABS/BV/DNV/LLOYDS...)
- Welding Procedure as per AWS or EMUA & qualified by (ABS/BV/DNV/LLOYDS...)
- Welder qualification & Auto welding machine certificate are qualified by (ABS/BV/DNV/LLOYDS...)
- Rolling procedure to be qualified by (ABS/BV/DNV/LLOYDS...)
- Hydrotest for linepipe as per ASME
- Visual & dimensional procedure, packing procedure.
- Handling & storage procedure.
- Supplementary testing for completed products: Tensile test, Impact Test, Bend test, Hardness Test on (Base Metal/Weld metal/HAZ), UT all longitudinal seams, RT at both ends 250mm.
- Type of cert: EN 10204: 3.2 (ABS/BV/DNV/LLOYDS...)
- Makers: PV Pipe-Viet Nam/Nippon- Japan/SEAH, Steel Flower, Samkang, Daiduk Piping, Dong Yang, EEW (Korea) & EEW – Malaysia
- Origin: Viet Nam/Japan/Korea & Malaysia



CHAPTER III

STEEL SHAPE

3.1 H- BEAM IN METRIC & INCH (Y.S \geq 248MPA)

- Standard: ASTM/JIS/EN10025/BS4360/
- Grade: A36/SS400/S275/BS4360 Gr.43A
- Dimension in mm: 100mm X 50mm to 900mm X 300mm
- Dimension in inch: 4.0 inchs X 4.0 inchs to 44 inchs X 16 inchs)
- Length: 6000mm or 12000mm
- Type of cert: EN 10204: 3.1 or EN 10204: 3.2 (ABS/BV/DNV/LLOYDS...)
- Makers: POSCO SS Viet Nam/Hyundai, Dongkuk/JFE/Kawasaki/Siam Yamato/Arcelormittal/Stahlwerk Thuringen/Tungho Steel/
- Origin: Vietnam/Korea/Japan/Thailand/Luxembourg/Germany/Taiwan

3.2 UNIVERSAL BEAM & COLUMN IN INCH (Y.S \geq 355MPA)

- Standard: ASTM/JIS/EN10025/EN10225/BS4360
- Grade: A572 Gr.50/SM490/S355/S355G8-G10 +N/M/BS4360Gr.50B/
- Dimension in inch: 4.0 inchs X 4.0 inchs to 44 inchs X 16 inchs
- Length: 6000mm or 12000mm
- Type of cert: EN 10204: 3.1 or EN 10204: 3.2 (ABS/BV/DNV/LLOYDS...)
- Makers: Hyundai/Dongkuk/JFE/Kawasaki/Siam Yamato/Arcelormittal/Stahlwerk Thuringen/TungHo Steel/
- Origin: Korea/Japan/Thailand/Luxembourg/Germany/Taiwan



3.3 CHANNEL (Y.S \geq 248MPA; \geq 355MPA)

- Standard: ASTM/JIS/EN10025
- Grade: A36/A572 Gr.50/SS400/S355JR/S355J0/S355J2+M
- Dimension in mm: 50 X 25 X 5mm to 380 X 100 X 13mm
- Dimension in inch: 3 X 1-3/8 inch to 18 X 4-1/8 inch
- Length: 6000mm or 12000mm
- Type of cert: EN 10204: 3.1 or EN 10204: 3.2 (ABS/BV/DNV/LLOYDS...)
- Makers: Hyundai/Dongkuk/JFE/Tata Steel UK
- Origin: Korea/Japan/Thailand/UK



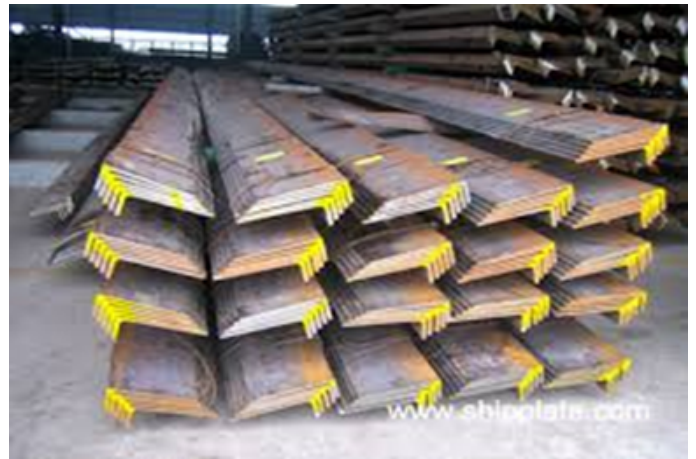
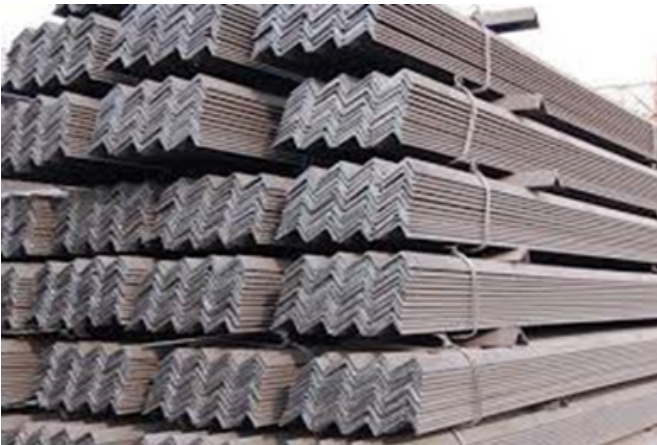
3.4 EQUAL ANGLE (Y.S \geq 248MPA; \geq 355MPA)

- Standard: ASTM/JIS/EN10025
- Grade: A36/A572 Gr.50/SS400/S355JR/S355J0/S355J2+M
- Dimension: 25 X 25 X 3mm up to 350 X 350 X 35mm
- Length: 6000mm or 12000mm
- Type of cert: EN 10204: 3.1 or EN 10204: 3.2 (ABS/BV/DNV/LLOYDS...)
- Makers: Hyundai/Dongkuk/JFE/Tata Steel/Feng Hsin/Triumph/Nhabe Steel/Thainguyen Steel
- Origin: Korea/Japan/Thailand/UK/Taiwan/Thailand/Vietnam



3.5 UNEQUAL ANGLE (Y.S \geq 248MPA)

- Standard: ASTM/JIS/EN10025
- Grade: A36/SS400/S275JR/S275J0
- Dimension: 63 X 36 X 4.5mm up to 200 X 150 X 18mm
- Length: 6000mm or 12000mm
- Type of cert: EN 10204: 3.1
- Makers: Hyundai/Dongkuk/JFE/Tata Steel UK/Feng Hsin
- Origin: Korea/Japan/UK/Taiwang/China



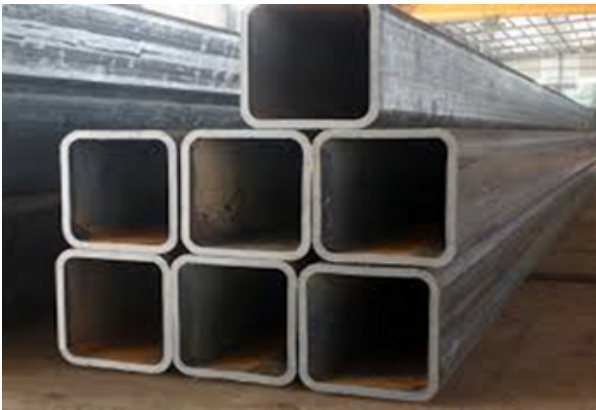
3.6 ROD BAR (Y.S \geq 248MPA; \geq 355MPA)

- Standard: ASTM/JIS/AISI
- Grade: A36/A193
B7/SS400/S45C/S55C/AISI1045/AISI4130/SCM430/SCM440
- Dimension: Φ 8mm to Φ 600mm
- Length: 6000mm or customized order
- Type of cert: EN 10204: 3.1 or EN 10204: 3.2 (ABS/BV/DNV/LLOYDS...)
- Makers: Posco/Besteel/Jee Yang IND/Ascometal
- Origin: Korea/France



3.7 SHS & RHS (Y.S \geq 248Mpa; \geq 355Mpa)

- Standard: ASTM/JIS/EN10025
- Grade: A36/ASTM A572/SS400/SM490/S275JR/S275J0/S275J2H/S355JR/S355J0/S355J2H
- SHS dimension: 20mm X 20mm X 2mm to 400mm X 400mm X 20mm
- RHS dimension: 25mm X 12mm X 1mm to 400mm X 200mm X 20mm
- Length: 6000mm or 12000mm
- Type of cert: EN 10204: 3.1 or EN 10204: 3.2 (ABS/BV/DNV/LLOYDS...)
- Makers: Tata Steel/Hyundai/Dongkuk
- Origin: Uk/Korea



3.8 FLAT, SQUARE & HEXAGONAL BAR (Y.S \geq 248Mpa; \geq 355Mpa)

- Standard: ASTM/JIS/EN10025
- Grade: A36/ASTM A572/SS400/S275/S355
- Dimension: Full & customized order
- Length: 6000mm
- Type of cert: EN 10204: 3.1
- Origin: Korea/Japan/Taiwan/India/China

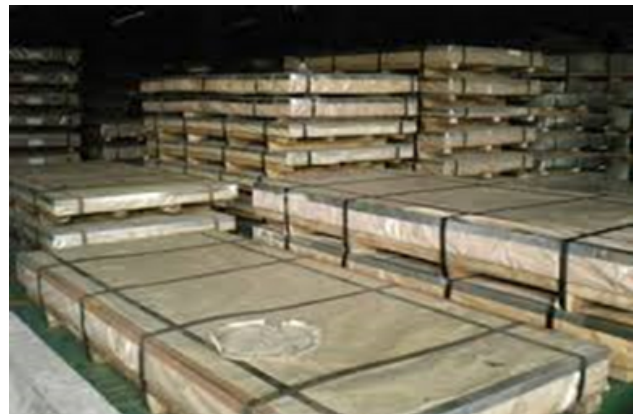


CHAPTER IV

STAINLESS STEEL, ALUMINIUM, COPPER, BRASS & BRONZE

4.1 STAINLESS STEEL PLATE & COIL

- Standard: ASTM, JIS, AISI, DIN
- Grade: 201; 304/304L; 316/316L; S31803 – duplex/S32205; S32750 & 32760 super duplex
- Surface conditions: BA; 2B; No.1; HL- No.4
- Thickness: 0.5mm to 10mm (coil); 3mm to 50mm (plate)
- Width: 1000mm to 3050mm
- Length: 6096mm or 12050mm; customized order
- Makers: Acerinox/Outokumpu/ThyssenKrupp/Nippon/Posco/Bahru Acerinox/Posco
- Origin: Spain/Sweeden/Germany/Japan/Korea/Malaysia/Vietnam



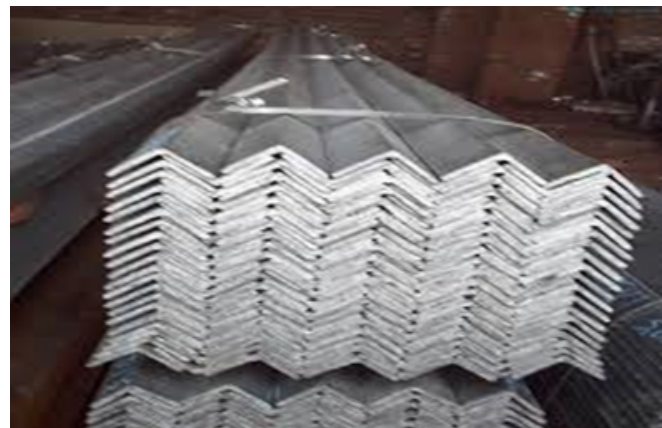
4.2 STAINLESS STEEL FLAT BAR

- Standard: ASTM, JIS, AISI, DIN
- Grade: 201; 304/304L; 316/316L
- Surface conditions: No.1
- Thickness: 3mm to 30mm
- Width: 20mm up to 300mm
- Length: 6096mm or customized order
- Makers:
Acerinox/Outokumpu/ThyssenKrupp/Nippon/Posco/Bahru Acerinox
- Origin:
Spain/Sweeden/Germany/Japan/Korea/Malaysia



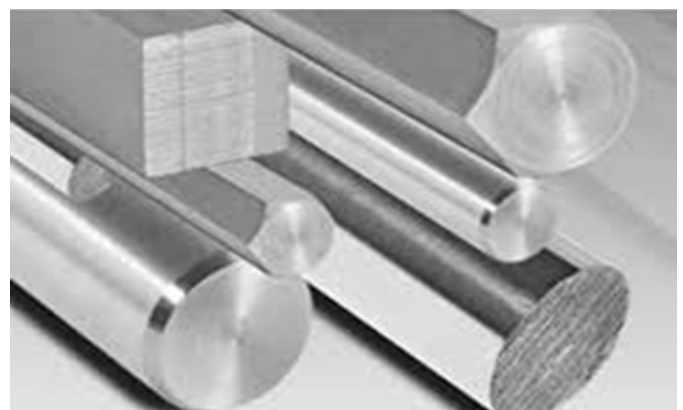
4.3 STAINLESS STEEL ANGLE BAR

- Standard: ASTM, JIS, AISI, DIN
- Grade: 201; 304/304L; 316/316L
- Surface conditions: No.1
- Dimension: (2 -10)mm (T) X (30 – 100)mm (W) X 6000mm (L)
- Makers: Nippon/Kobe/Posco
- Origin: Japan/Korea



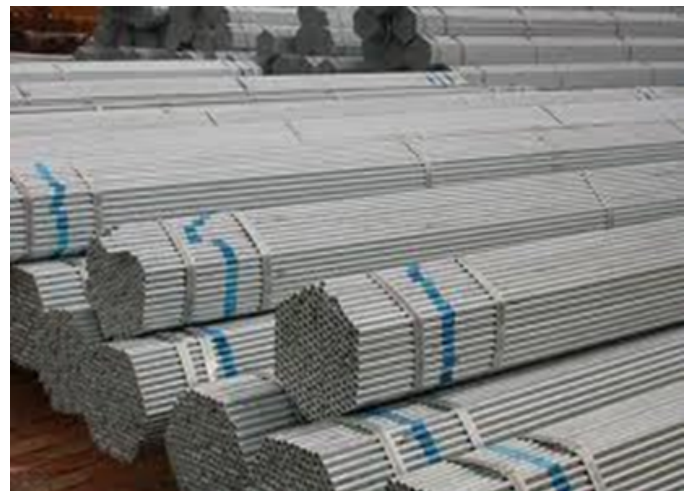
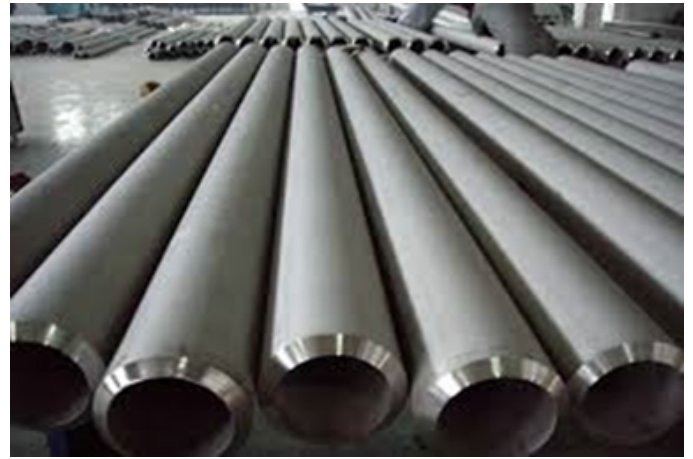
4.4 STAINLESS STEEL SQUARE, RECTANGULAR, ROUND, HEXAGONAL BARS

- Standard: ASTM, JIS, AISI, DIN
- Grade: 201; 304/304L; 316/316L
- Surface conditions: No.1
- Dimension: full size & customized order
- Origin: Spain/Japan/Korea/Taiwan/India



4.5 SMLS STAINLESS STEEL PIPE

- Standard: ASTM, JIS, AISI, DIN
- Grade: 304/304L; 316/316L; UNS S31803/S32205
- Surface condition: BA; 2B; No.1; HL-No.4
- OD size: 1/2 inch to 20 inches
- Thickness: SCH5 to SCHXXS
- Length: 5,800mm or 11,800mm
- Makers: ThyssenKrupp/Nippon/Posco
- Origin: Germany/Japan/Korea



4.6 WELD STAINLESS STEEL PIPE

- Standard: ASTM, JIS, AISI, DIN
- Grade: 304/304L; 316/316L
- Surface condition: BA; 2B; No.1; HL-No.4
- OD size: 1/2 inch to 20 inches
- Thickness: SCH5 to SCHXXS
- Length: 6000mm or 11,800mm
- Makers: ThyssenKrupp/Posco/Nippon/Son Ha/Huu Lien/Gia Anh
- Origin: Germany/Korea/Japan/Vietnam

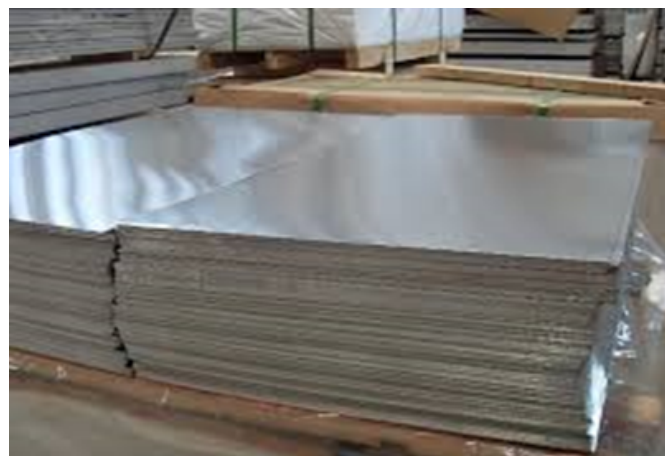
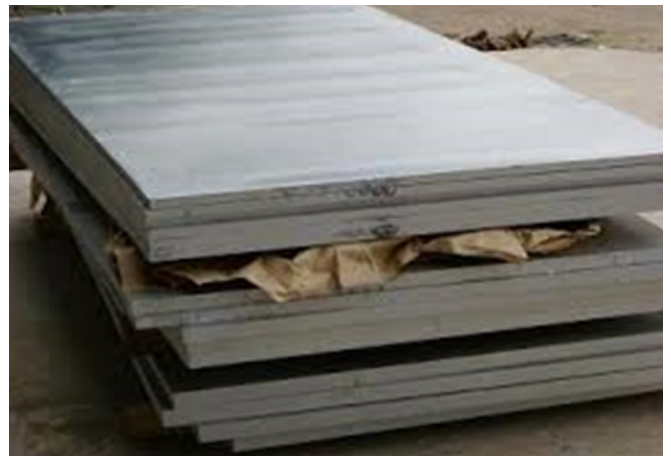
4.7 STAINLESS STEEL SHS & RHS

- Standard: ASTM, JIS, AISI, DIN
- Grade: 304/304L; 316/316L
- Surface conditions: BA; 2B; No.1; HL-No.4
- Thickness: 1.0mm to 10.0mm
- Width: 15mm to 150mm
- Length: 6000mm or 11,800mm
- Origin: Korea/Japan/Taiwan/India/Vietnam



4.8 ALUMINIUM PLATE

- Standard: ASTM
- Grade: ASTM A5052/ASTM A5083/
ASTM A6061/ASTM A7075
- Thickness: 1.0mm to 200mm
- Width: 1219mm to 2438mm
- Length: 1524mm to 6096mm
- Type of cert: EN 10204:3.1 or EN
10204:3.2 (ABS/BV/DNV/LLOYDS...)
- Makers: Kamensk Uralsky
Metallurgical Works/Taiwell
Aluminum Corporation
/Garmco/Noranda/Kaiser
- Origin: Russia/Taiwan/UK/USA



4.9 COPPER, BRASS, BRONZE PLATE



- Standard: ASTM/JIS
- Grade: C1100/C11000; C1220/C12200; C2400/C24000; C2800/C28000;...
- Thickness: 0.2mm to 20mm
- Width: 0.4mm to 1219mm
- Length: 2000mm to 15000mm
- Type of cert: EN 10204:3.1
- Origin: Korea/Russia/Taiwan/Thailand

4.10 CUNI PIPE – FITTING & FLANGE

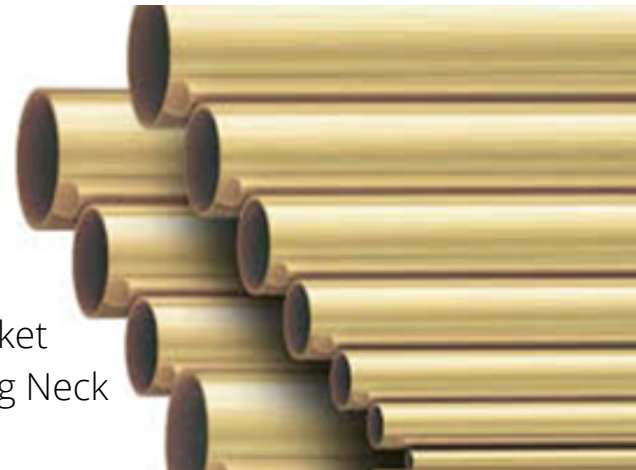
- Standard: ASTM /EMUA
- Grade: ASTM B466 UNS C70600/EEMUA 144 UNS/EEMUA 145 UNS/EEMUA 146 UNS

Cuni – SMLS Pipe :

- Thickness: 1.0mm to 25.4mm
- OD size: 1/2 inch to 24 inches

Flange ASME B16.5

- Product name: Weld Neck; Slip – On; Blind; Socket Welding; Thread; Lap Joint; Swivel; Long Welding Neck Flanges
- Size: 1/2 inch to 24 inches
- Class: 150# to 900#
- Type of gasket: FF/RF/RTJ



Fitting as per ASME B16.9/ASME B16.11

- Product name: 45 Deg/90 Deg/180 Deg – Short & Long Elbow Equal Tee & Reduce Tee/Eccentric & Concentric Reducer/Cap
- Size: 1/2 inch to 24 inches
- Thickness: SCH10 to SCH XXS

Certificate & Origin

- Type of cert: EN 10204:3.1or EN 10204:3.2 (DNV/Lloy/ABS/BV...)
- Origin: Korea/Russia/Thailand/Taiwan



CHAPTER V

LINEPIPE MATERIALS

5.1 CARBON STEEL FLANGE

- Product Name: Weld Neck; Slip-On; Blind; Socket Welding; Thread; Lap Joint; Swivel; Long Welding Neck Flanges
- Standard: ANSI/ASME/API/MSS/DIN/JIS
- Material: A105/A105N/A350 LF2/A350 LF3/A516 Gr.70/A694 F65...F70
- Size: 1/2 inch to 26 inches
- Class: 150# up to 2500#
- Type of gasket: FF/RF/RTJ
- Origin: Spain/Italy/Germany/Korea



5.2 STAINLESS STEEL FLANGE

- Product Name: Weld Neck; Slip-On; Blind; Socket Welding; Thread; Lap Joint; Swivel; Long Welding Neck Flanges
- Standard: ANSI/ASME/API/MSS/DIN/JIS
- Material: A182 -F304/F304H/ F304L/ F316/F316H/F316L/F321/F321H/F310S /F317/F317L/F317L/F347
- Size: 1/2 inch to 26 inches
- Class: 150# up to 2500#
- Type of gasket: FF/RF/RTJ
- Origin: Spain/Italy/Germany/Korea



5.3 DUPLEX & SUPER DUPLEX FLANGE

- Product name: Weld Neck; Slip-On; Blind; Socket Welding; Thread; Lap Joint; Swivel; Long Welding Neck Flanges
- Standard: ANSI/ASME/API/MSS/DIN/JIS
- Material: ASTM A182 GR. F51, F53...
- Size: 1/2 inch up to 24 inches
- Class: 150# up to 5000#
- Type of gasket: FF/RF/RTJ
- Origin: Spain/Italy/Germany/Korea



5.4 ALLOY FLANGE & WELD OVERLAY SERVICE

- Product Name: Weld Neck; Slip-On; Blind; Socket Welding; Thread; Lap Joint; Swivel; Long Welding Neck Flanges
- Standard: ANSI/ASME/API/MSS/DIN/JIS
- Material: B564 UNS NO 6625, 8825...
- Size: 1/2 inch up to 26 inches
- Class: 150# up to 5000#
- Type of gasket: FF/RF/RTJ
- Origin: Spain/Italy/Germany/Korea
- Weld overlay services for all flanges with alloy materials: Inconel 625/ incoloy 825/ duplex S31803



5.5 CARBON STEEL FITTING FOR LINEPIPE & STRUCTURE

- Product name: 45 Deg/90 Deg/180 Deg – Short & Long Elbow Equal Tee & Reduce Tee/Eccentric & Concentric Reducer/Cap
- Standard: ASME B16.9 & ASME B16.11/ ANSI B16.9 & ANSI B16.11
- Material: A234 WPB/A420 WPL3 – WPL9/WPHY42 – WPHY 70/A105N
- Size: 1/2 inch up to 26 inches
- Thickness: SCH20 to SCH XXS or customized order
- Connection: BW/SW/Thread
- Origin: Spain/Italy/Korea/Thailand



5.6 STAINLESS STEEL, DUPLEX, SUPER DUPLEX, ALLOY FITTING

- Product name: 45 Deg/90 Deg/180 Deg – Short & Long Elbow Equal Tee & Reduce Tee/Eccentric & Concentric Reducer/Cap..
- Standard: ASME B16.9 & ASME B16.11/ ANSI B16.9 & ANSI B16.11
- Material: A234 WP1-WP92/A815 WP410/ A815 WP430/A403 WP304L/A403 WP316L/A403 WP347L/ASTM A815 S31803/ ASTM A815 S32750/ASTM A815 S32760
- Size: 1/2 inch up to 26 inches
- Thickness: SCH20 up to SCH XXS or customized order
- Connection: BW/SW/Thread
- Origin: Spain/Italy/Korea/Thailand



5.7 VALVE FOR OIL & GAS, WATER, CHEMICAL

- Product Name: Ball Valve; Global Valve; Butterfly Valve; Gate Valve; Safety Valve; Check Valve; Plug Valve; Choke Valve; Control Valve; Pressure Reduce Valve; Special Alloy Valve
- Standard: API/BS/DIN & JIS Standard
- Material: Carbon Steel/Stainless Steel/Low Temp Carbon Steel/High Temperature Carbon Steel/Duplex/Super Duplex/Bronze/Brass...
- Size: 1/2 inch up to 26 inches
- Class: 150# to 2500#
- Type of gasket: BW/Flange End/SW/Thead
- Origin: Italy/USA/Korea/Japan/Thailand/Taiwan



5.8 STAINLESS, DUPLEX & SUPER DUPLEX BOLT, STUD-BOLT, U-BOLT, NUT & WASHER

- Product name: Bolt; Stud-bolt; U-bolt; Nut; Heavy Hex Nut & Washer
- Material of Bolt: SS304/SS316/A193B8/A193B8M/A93B8T/A320B8/A320B8M/A320B8T/S31803/S32750/S32760
- Material of Nut: A194 B8/A194 B8M/A194 B8T/A194 B8/A194B8M/A194 B8T/SS304/SS316/S31803/S32750/S32760.
- Size: 1/4 inch up to 3.0 inches
- Coating: Self color/PTFE/Fluorocarbon coated/Neoprene coated/EPDM/Cermic/Welding overlay – Inconel.
- Origin: EU/Korea/Singapore/UAE



5.9 CARBON STEEL BOLT, STUD-BOLT, U-BOLT, NUT, WASHER

- Product name: Bolt; S-tud bolt; U-bolt; Nut; Heavy Hex Nut & Washer
- Material of bolt: A193 B7/A193 B7M/A307/A320L7/A320L7M/A325/A490
- Material of Nut & Washer: A194 2H/A194 2HM/A194 7M/A194L7M/A563/F436
- Size: 1/4 inch up to 3.0 inches
- Coating: Self color/PTFE/Fluorocarbon coated/Neoprene coated/EPDM/Cermic/Welding overlay – Inconel.
- Origin: EU/Korea/Singapore/UAE



5.10 RUBER GASKET

- Apply for: Oil & chemical resistance
- Material: Neoprene/Ruber/Polypropylene/EPDM
- Standard: B16.20; B16.21; B16.47
- Working temperature: -120 deg Cup to 250 deg C
- Size: 1/2 inch up to 36 inches
- Class: 150#, 300# & 600#
- Origin: Korea/Thailand/India/Japan/Autrialia



5.11 NONE ABETOS GASKET

- Apply for: Chemical, gas, hydrocarbon, water & acids
- Standard: B16.20; B16.21; B16.47
- Material: Polypopylen + Fiberglass
- Highest temperature at: 400 deg C
- Size: 1/2 inch up to 36 inches
- Class: 150#, 300# & 600#
- Origin: Korea/Thailand/India/Japan/Autrialia



5.12 TEPLON (PTFE 100% VIRGIN) GASKET

- Apply for: Chemical, acids, water
- Material: PTFE virgin 100%
- Standard: B16.20; B16.21; B16.47
- Class: 20Kgf/cm² (2.0Mpa)
- Working temperature: -80 deg C to 150 deg C
- High volte insulator
- Size: 1/2 inch to 36 inches
- Origin: Korea/Japan/Australia



5.13 SPIRAL WOUND GASKET

- Apply for: Petrochemical, nuclear, thermal, refinery
- Material: SS304/SS304L + Graphite; SS316/SS316L + Graphite
- Standard: B16.20
- Working at high pressure
- High & Low temperature working
- Size 1/2 inch to 24 inches
- Class: 150#, 300#, 600#
- Origin: Korea/Japan/Thailand/India/Australia/Norway/UK



5.14 SOFT IRON, STAINLESS STEEL, DUPLEX, SUPER DUPLEX, ALLOY OVAL RING & OCTAGONAL RING GASKET

- Apply for: High pressure gasket in offshore & onshore.
- High temperature working
- Size: 1/2 inch to 36 inches
- Class: 150# to 2500# (1/2 inch up to 24 inches ASME B16.20)
- Class: 300# to 900# (26 inches up to 36 inches ASME B16.47 Series A)
- Other Class: 1-1/2 inch to 20 inches: API 6A standard
- Material: Soft Iron/SS304/SS316/SS321/SS347/Inconel 625/incoloy 825/Duplex S31803
- Origin: Korea/Australia/India/Thailand/Japan



CHAPTER VI

MISCELLANEOUS MATERIALS FOR RISER CLAMP, LOADING OUT JACKET, MUDMAT, DOCKING FENDER & HELIDECK

6.1 NEOPRENE/EPDM/POLYCHLOROPREN

- Apply for: Gasket, Riser Clamp & Hard Environment
- Shore A: 50 – 75 Shore A
- Minimum tensile strength: 19 Mpa
- Minimum elongation at break: 400%
- Minimum tear strength: 35 KN/m
- Average density: 1250Kg/m³
- Working temperature: -50 to 120 deg C
- Origin: Japan/Viet Nam



6.2 HARD TIMBER

- Apply for: loading out of super heavy jacket & vessel, mudmat of jacket, docking fender
- Bending parallel to grain (Mpa): 9 - 19
- Compression parallel to gain (Mpa): 7 - 18
- Compression perpendicular to grain (Mpa): 5 -15
- Shear parallel to grain (Mpa): 2 – 12
- Modulus of elasticity (Mpa): 8,000 – 25,000
- Average dry density (Kg/m³): 700Kg/M³ – 1050kg/m³
- Tested in acc to ASTM D143 – 14; ASTM D2395 – 14; ASTM D1037 – 12
- Witnessed by Bureau Veritas – International third party (Cert: 3.2)



6.3 HELIDECK PERIMETER SAFETY NET ON TOPSIDE, OFFSHORE VESSEL

NamLong designs, processes & inspects Helideck Perimeter Safety Net on Topsides, Offshore Vessels. We used to Vinyl coated chain link 9GA & insteaded directly to pipe support dia Φ 48.3mm, 60.3mm, 73mm & this was very difficult for maintenance & repair because of old technology system. Nowadays, We designs Helideck Perimeter Safety Net in two parts and it is easy for installation, maintenance & repair as below:

PART I: FIXED SUPPORT FRAMES

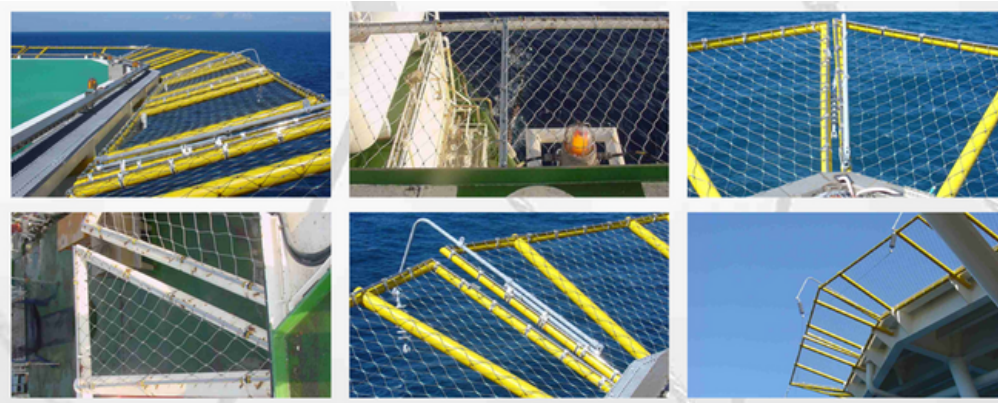
Support frames are welded by SMLS pipe $\Phi 48.3\text{mm}$ or $\Phi 60.3\text{mm}$ or $\Phi 73.0\text{mm}$ & fixed to helideck all the life time. Technique is followed to CAP 437.

PART II: SAFETY NET FRAMES

Safety net frames are welded by stainless steel tube $\Phi 21.3\text{mm} \times 2.1\text{mm}$ to be tube frames with dimension equivalent to support frame's ones. The safety net frames is installed stainless steel wire rope dia 2.4mm with opening size: 3inch X 3inch or customized order. Safety net frames to be installed with the fixed support frame through Heliband & Heliclip by stainless steel fasten (Bandit -Brand, Bandit - Buckle 1/2inch SS316)

MATERIALS, PROCEDURE & CERTIFICATION:

- Stainless steel tube OD 21.3mm X 2.1mm X 6000mm SS316/SS316L
- Stainless steel cable mesh dia rod: 2.4mm, opening size: 3inch X 3inch SS316
- Heliband OD 48.3mm or 60.3mm C/W pipe support 1-1/2inch or 2inch Sch40/80
- Heliclip OD 21.3mm C/W tube OD 21.3mm tube frame.
- Band-it brand 1/2inch X 100ft/roll, SS316
- Band-it buckle 1/2inch X 100PCS/Box
- Certification & technique to be applied
- All raw materials shall be checked carefully certificate of manufacturers before using
- CAP 437 & Helideck Safety Net Guide – International Standard for Perimeter Safety Net
- Welding procedure in acc to AWS D1.6 for stainless steel
- Welder qualification certification of each welder
- Liquid penetrant inspection procedure for SS316 tube frame
- Dimension & visual check procedure
- Drop test procedure which is approved by Bureau Veritas & Client



DROP TEST:

- Load test with weight 120kg up to 250kg at a high level 1.0m follow CAP 437



CONTACT INFORMATION



(84 254) 3818 879



info@namlongco.com.vn



42B, Street 30/4, Ward 9, Vung Tau City, Ba
Ria - Vung Tau Province



www.namlongco.com.vn



<https://www.facebook.com/Namlong42b/>



[https://www.youtube.com/channel/UCXKr
TleqbYymALIVxJNrDSw/](https://www.youtube.com/channel/UCXKrTleqbYymALIVxJNrDSw/)

